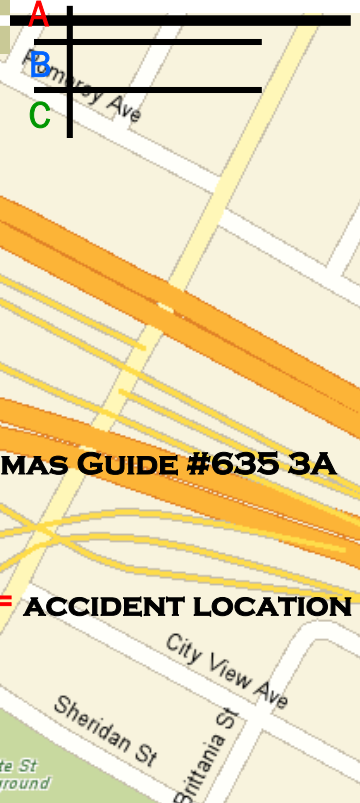




TACTICAL DECISION GAMES

Use Training Code 08AI for Network Staffing Entries



Role-playing Ideas

- Have one member “role play” the position of Task Force Commander in order to provide a solution.
- You can also divide members into groups in order to develop solutions.
- Solutions should be submitted via email to tdg@lafdtraining.org
- Solutions from the field can be viewed online at www.LAFDtraining.org.

PHYSICAL RESCUE

You are the Task Force Commander assigned to Fire Station 2. It has been raining steadily for the last three hours. It is 0500 hours when Battalion 7, Task Force 2, Rescue 2, Task Force 4, EMS 7 and Heavy Rescue 56 are dispatched on a Physical Rescue. Incident location is the northbound 5 freeway transition road to the eastbound 10 freeway. It is two lanes wide and approach is downhill to the incident. Traffic is moving at 55 mph.

Your Task Force and rescue ambulance will be the first arriving fire department resources.

As you approach the incident you observe that the California Highway Patrol is not on scene. The accident has slowed traffic to approximately 35 mph. Arriving on scene, you observe a large passenger van that is upside down.

There appears to be approximately 8 people in it. Another civilian vehicle has been involved in this accident and is located within 20’ of the van. It has sustained severe passenger space intrusion. There are 3 victims in it.

You have a 10 member task force. Your top member is a first house probationary firefighter.

TFC Guidelines

- Describe how you would provide for scene safety.
- Place the first alarm assignment.
- What additional resources will you call for?
- Discuss tactics by member position for your Task Force.
- Develop multi casualty strategy to handle this incident

L
A
F
D

